



Clark Regional Wastewater District

Ten-Year Capital Program Capital Project Profile

Royle Road Pump Station Pump Addition (3-603A)

Location: Ridgefield

Number: TBD

GL Number: TBD

Phase: Planning

Project Manager: TBD

GSP Basin: Royle Road – 3-603

Capital Improvement Project ☒

General Facilities ☒

District Installed Infrastructure ☐

Septic Elimination Program ☐

Developer Reimbursement Program ☐

Fleet & Facilities ☐

Restoration & Replacement Project ☐

Restoration & Replacement - Gravity ☐

Restoration & Replacement – PS & FM ☐

Restoration & Replacement – Fleet & Facilities ☐

Project Definition:

Background. The Royle Road Pump Station was constructed in 2016 with two pumps installed in the triplex pump station. As flows in the basin increase, the District will need to install a third 70 hp pump to increase the pump station capacity.

Objective. Increase pump station capacity to 1,390 gpm to accommodate the additional flows from development in the sewer basin.

Scope of Work. Install third 70 hp pump and associated electrical and control appurtenances.

Project Statistics. Pump Station – install one 70 hp pump.

Photos: (Map of area on the reverse side)

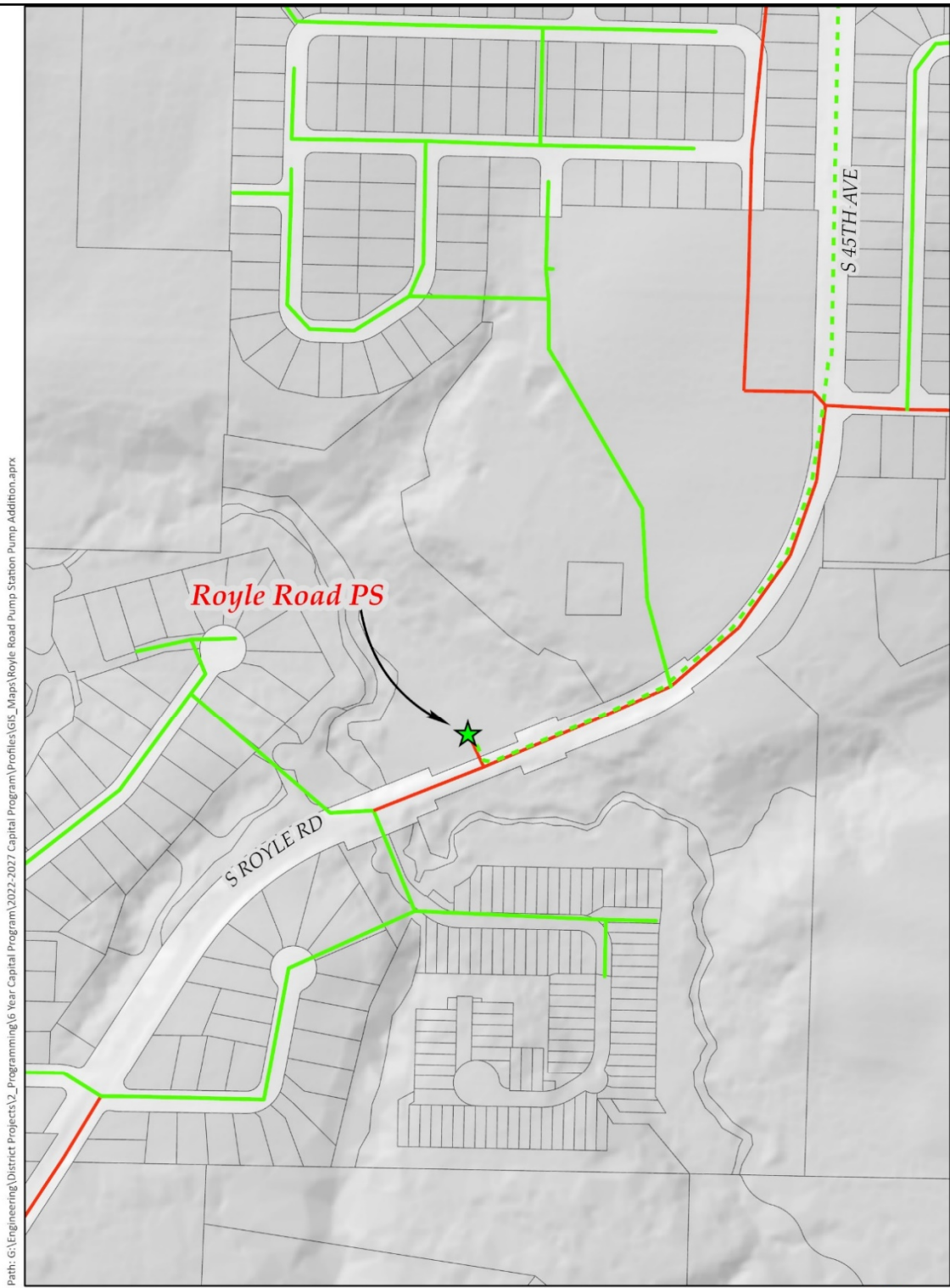
Budget Information:

Project Cost Estimate:

Total Project Cost:	\$540,000
Construction Cost:	\$450,000
Basis of Estimate:	Planning
Date of Estimate:	Sept. 2023

Schedule Information:

<u>Activity</u>	<u>Year</u>
Predesign	2027
Permitting	N/A
Real Property/ROW	N/A
Design	2027
Bid	2028
Construction	2028



Path: G:\Engineering\District Projects\2_ Programming\6 Year Capital Program\2022-2027 Capital Program\Profiles\GIS_Maps\Royle Road Pump Station Pump Addition.aprx



*Royle Road Pump Station Pump
Addition*

