



Gee Creek Meadows Force Main Redirection (CIP 3-502A)

Location: Ridgefield

Number: TBD

GL Number: TBD

Phase: Planning

Project Manager: TBD

GSP Basin: Gee Creek (3-502)

Capital Improvement Project ☒

General Facilities ☒

District Installed Infrastructure ☐

Septic Elimination Program ☐

Developer Reimbursement Program ☐

Fleet & Facilities ☐

Restoration & Replacement Project ☐

Restoration & Replacement - Gravity ☐

Restoration & Replacement – PS & FM ☐

Restoration & Replacement – Fleet & Facilities ☐

Project Definition:

Background. One of the critical elements in taking the Ridgefield WWTP off-line is redirecting the Gee Creek Meadows Pump Station flow toward the Pioneer Canyon Pump Station and its eventual conveyance to the Salmon Creek system. The existing Gee Creek Meadows Pump Station and force main will be modified and directed to the future Gee Creek Plateau Pump Station and ultimately to the Pioneer Canyon Pump Station. The pump station upgrades will occur separately ahead of the force main redirection.

The alignment of the force main remains to be confirmed. Sections of the force main may be installed ahead of the need to capitalize on the opportunity to participate in Developer and City-led projects.

Objective. Construct force main from Gee Creek Meadows Pump Station to the future Gee Creek Plateau Pump Station.

Scope of Work. Install approximately TBD feet of parallel 12-inch force main.

Project Statistics. Force main – TBD feet of 12-inch force main.

Photos: (on the reverse side)

Budget Information:

Project Cost Estimate:

Total Project Cost:	\$2,200,000
Construction Cost:	\$1,850,000
Basis of Estimate:	Planning
Date of Estimate:	Sept. 2023

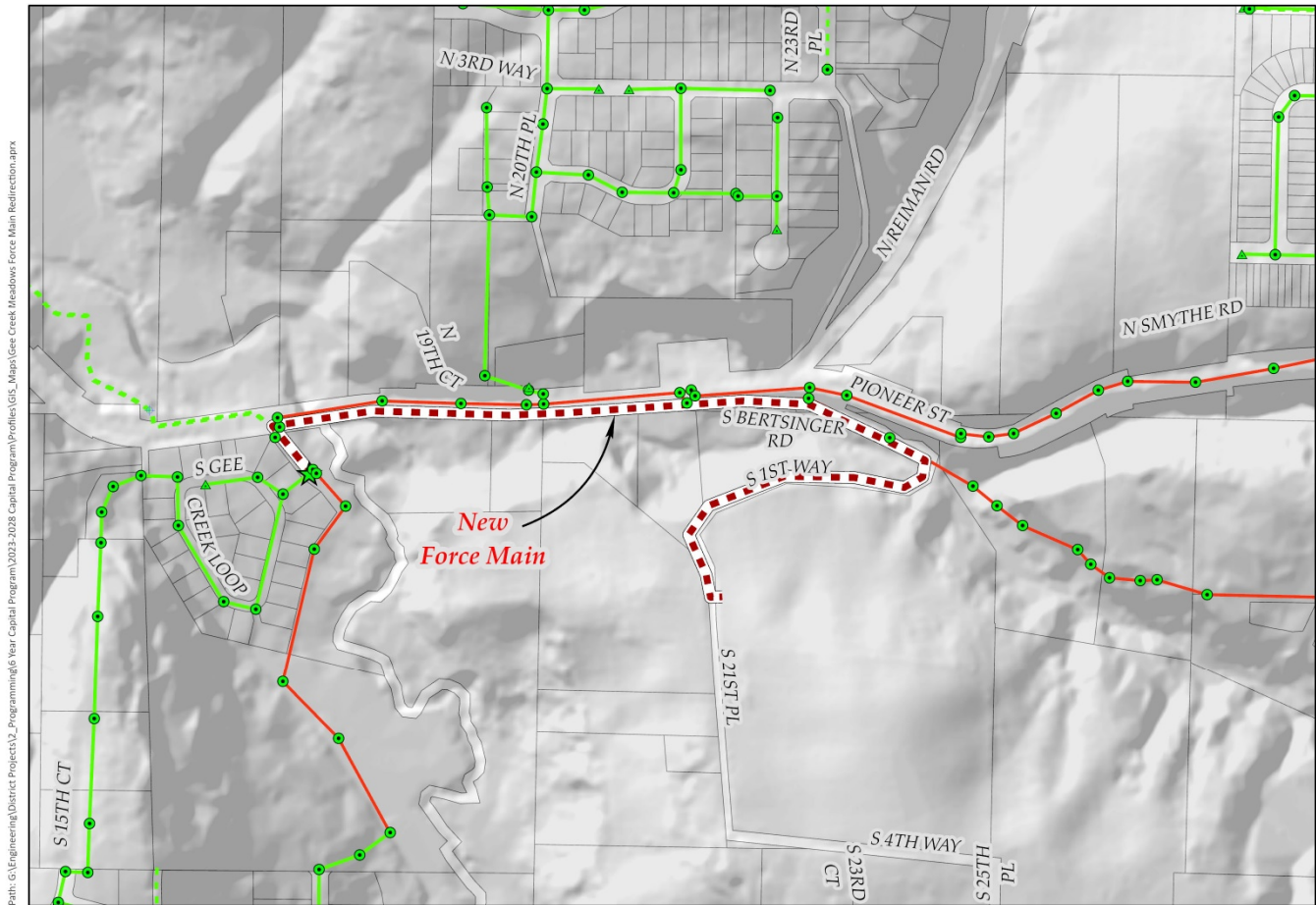
Schedule Information:

<u>Activity</u>	<u>Year</u>
Predesign	2022-2024
Permitting	2029-2030
Real Property/ROW	2029-2030
Design	2029-2030
Bid	2031
Construction	2031



Clark Regional Wastewater District

Ten-Year Capital Program Capital Project Profile



Path: G:\Engineering\District Projects\2_Programming\6 Year Capital Program\2023-2028 Capital Program\Profiles\GIS_Maps\Gee Creek Meadows Force Main Redirection.aprx

Gee Creek Meadows Force Main Redirection

