



Clark Regional Wastewater District

Ten-Year Capital Program Capital Project Profile

Carty Road Pump Station (CIP 3-603B)

Location: Ridgefield

Number: TBD

GL Number: TBD

Phase: Planning

Project Manager: Les MacDonald

GSP Basin: Royle Road – 3-603

Capital Improvement Project ☒

General Facilities ☐

District Installed Infrastructure ☐

Septic Elimination Program ☐

Developer Reimbursement Program ☒

Fleet & Facilities ☐

Restoration & Replacement Project ☐

Restoration & Replacement – Gravity ☐

Restoration & Replacement – PS & FM ☐

Restoration & Replacement – Fleet & Facilities ☐

Project Definition:

Background. Identified in 2017 General Sewer Plan with modifications required during development planning. Provide a new Pump Station and Force main to serve the Royle Road Mini Basin. There are five pump stations planned in this mini basin. This facility is centrally located and receives flow from up to three other satellite pump stations. This pump station and force main will discharge into the gravity system that flows to the Kennedy Farms Pump Station.

Objective. Extend service to proposed residential developments along NW Carty Road.

Scope of Work. Pump station and force main along NW Carty Road or alternate route to Kennedy Farms Pump Station.

Project Statistics.

Force main: 3,500 feet of 6-inch force main.

Pump station: Duplex submersible station for TBD gpm at startup, three phase electrical service, diesel generator; control kiosk.

Photos: (Map of area on the reverse side)

Budget Information:

Project Cost Estimate:	
Total Project Cost:	\$1,860,000
Construction Cost:	\$1,590,000
Basis of Estimate:	Planning
Date of Estimate:	Sept. 2023

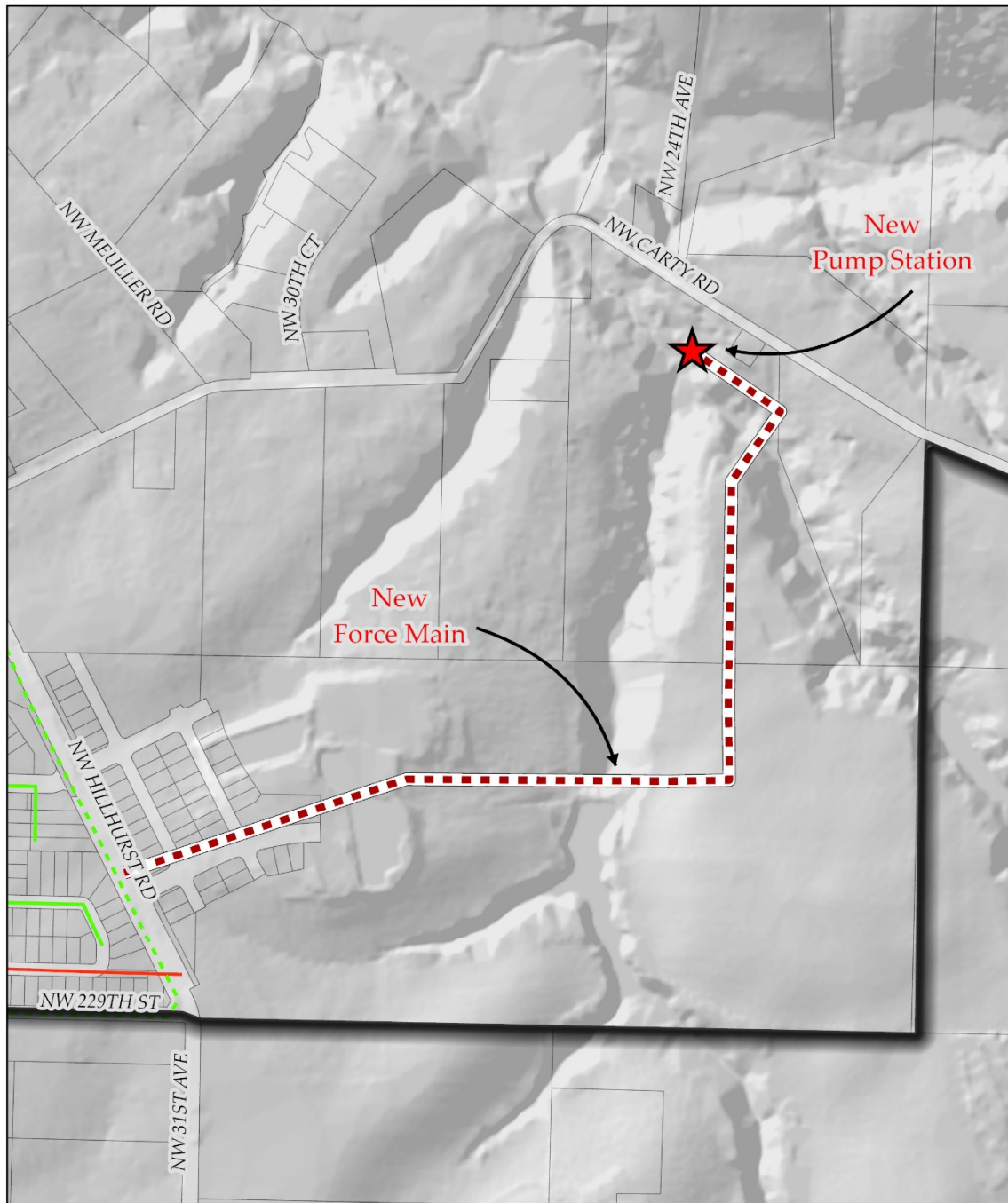
Schedule Information:

Activity	Year
Predesign	By Others
Permitting	By Others
Real Property/ROW	By Others
Design	2023-2024
Bid	By Others
Construction	2024-2025



Clark Regional Wastewater District

Ten-Year Capital Program Capital Project Profile



Carty Road Pump Station

