



# Clark Regional Wastewater District

## Ten-Year Capital Program Capital Project Profile

### DCWTS Phase 2A (CIP 2-1606B, 3-601A)

**Location:** Central and Ridgefield

**Number:** 27-2021-0074

**GL Number:** 409-000-189-00-01-54

**Phase:** Design

**Project Manager:** Dale Lough

**GSP Basin:** Whipple Creek East – 2-1605,  
I-5 Corridor – 2-1606, Pioneer Canyon – 3-601

**Capital Improvement Project** ☒

General Facilities ☒

District Installed Infrastructure ☐

Septic Elimination Program ☐

Developer Reimbursement Program ☐

Fleet & Facilities ☐

**Restoration & Replacement Project** ☐

Restoration & Replacement - Gravity ☐

Restoration & Replacement – PS & FM ☐

Restoration & Replacement – Fleet & Facilities ☐

#### **Project Definition:**

**Background.** Components of the Discovery Corridor Wastewater Transmission System (DCWTS) constructed during the DCWTS Phase 1 project require capacity upgrades to accommodate growth in the service area and redirection of the Ridgefield Treatment Plant. This project addresses upgrades to the Pioneer Canyon, and Neil Kimsey Regional pump stations, and will include improvements to Legacy Pump Station.

Pioneer Canyon pump station currently has two force mains, only one of which is in use. DCWTS Phase 2A includes improvements to facilitate operation and maintenance access to the existing 20-inch force main that will be put into service following the project. This will increase the firm capacity from 2 MGD to 4.8 MGD. The Neil Kimsey pump station will have two additional pumps installed to increase the firm capacity from 2.5 MGD to 3.9 MGD. Improvements to Legacy Pump Station will focus on current facility deficiencies and enhance pump station monitoring.

**Objective.** Upgrade the capacity of the Pioneer Canyon and Neil Kimsey Regional pump station and force main systems. Address current facility deficiencies and enhance monitoring of the Pioneer Canyon, Neil Kimsey Regional, and Legacy Pump Station facilities.

**Scope of Work.** Pioneer Canyon (3-601A) – Install a valve vault with motorized valves, flow metering vault, above grade pigging facility, plug and transfer switch for a portable generator, remove redundant flow meter, and replace pressure gauges.

Neil Kimsey Regional (2-1606B) – Install two additional 160 Hp pumps, associated VFD's, motorized valves, plug and transfer switch for a portable generator, pressure transmitter, automated flushing system, and replace pressure gauges and top of influent manhole.

Legacy Pump Station – Install plug and transfer switch for a portable generator, hose bib to existing water service, pressure transmitter, and replace existing slide gate and actuator, and pressure gauges.

**Project Statistics.** N/A



# Clark Regional Wastewater District

## Ten-Year Capital Program Capital Project Profile

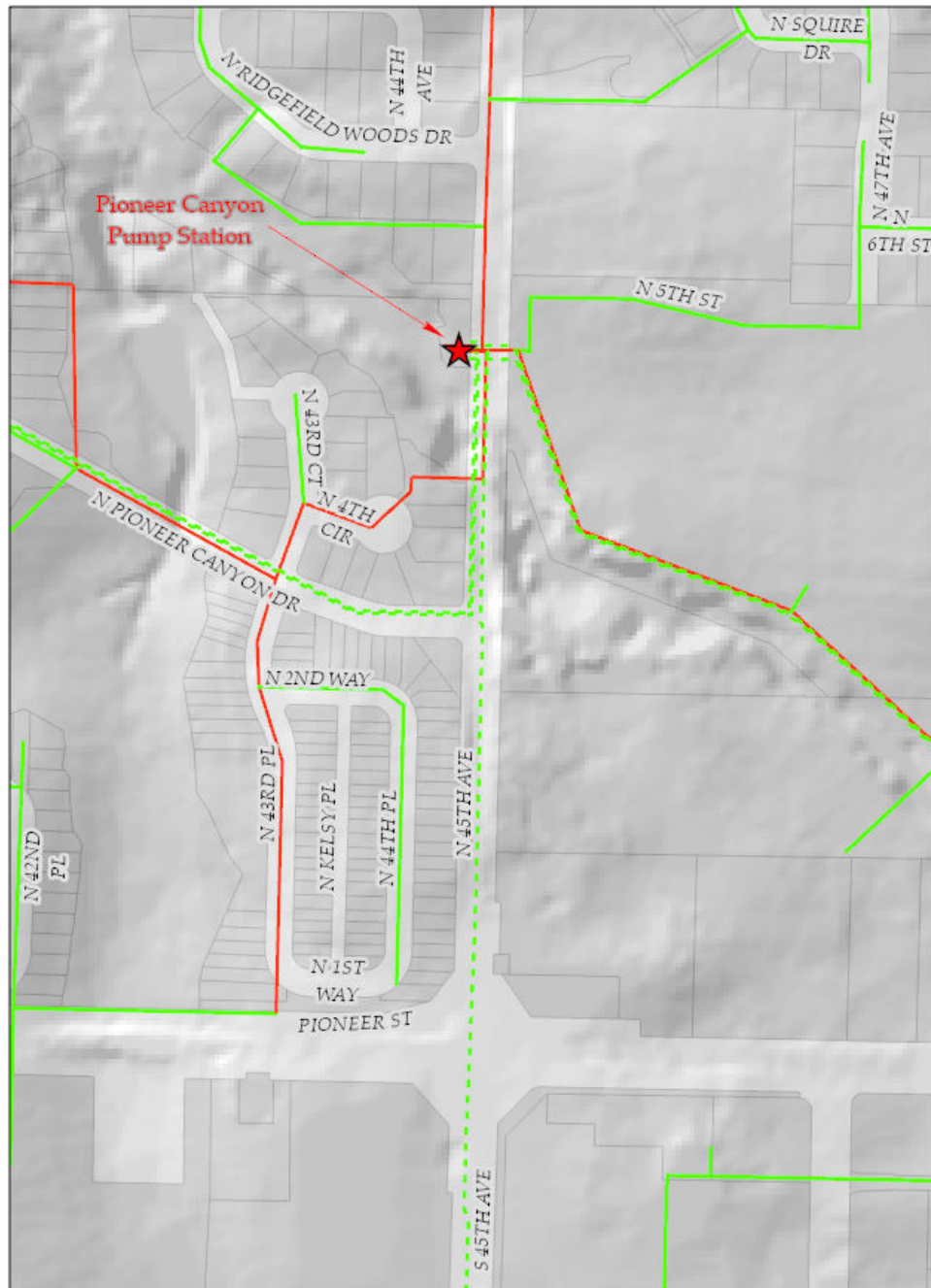
Photos: (on the reverse side)

### Budget Information:

<u>Project Cost Estimate:</u>	
Total Project Cost:	\$3,020,000
Construction Cost:	\$2,250,000
Basis of Estimate:	Predesign
Date of Estimate:	Sept. 2023

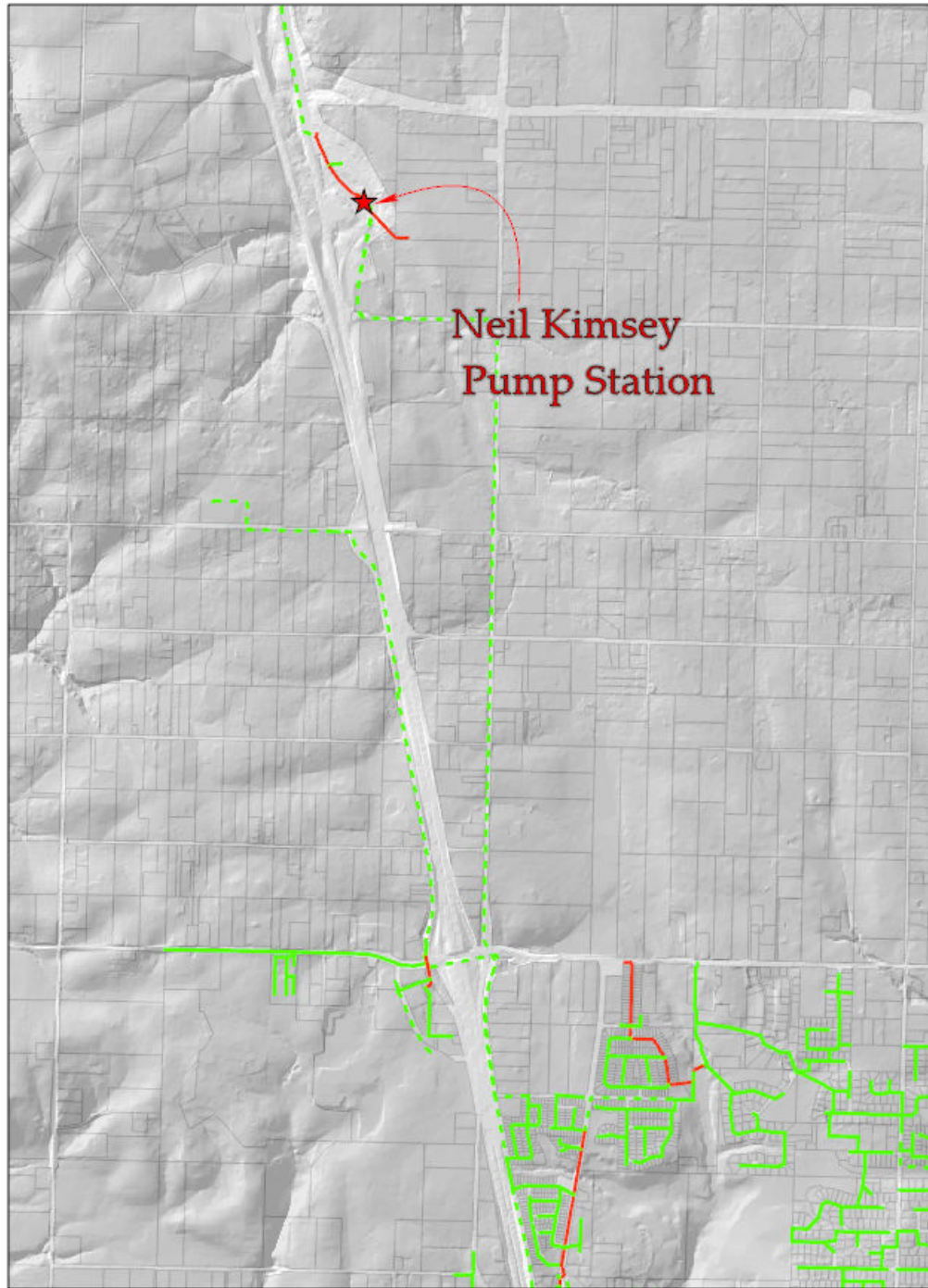
### Schedule Information:

<u>Activity</u>	<u>Year</u>
Predesign	2021-2023
Permitting	2022-2024
Real Property/ROW	2022-2024
Design	2022-2024
Bid	2024
Construction	2024



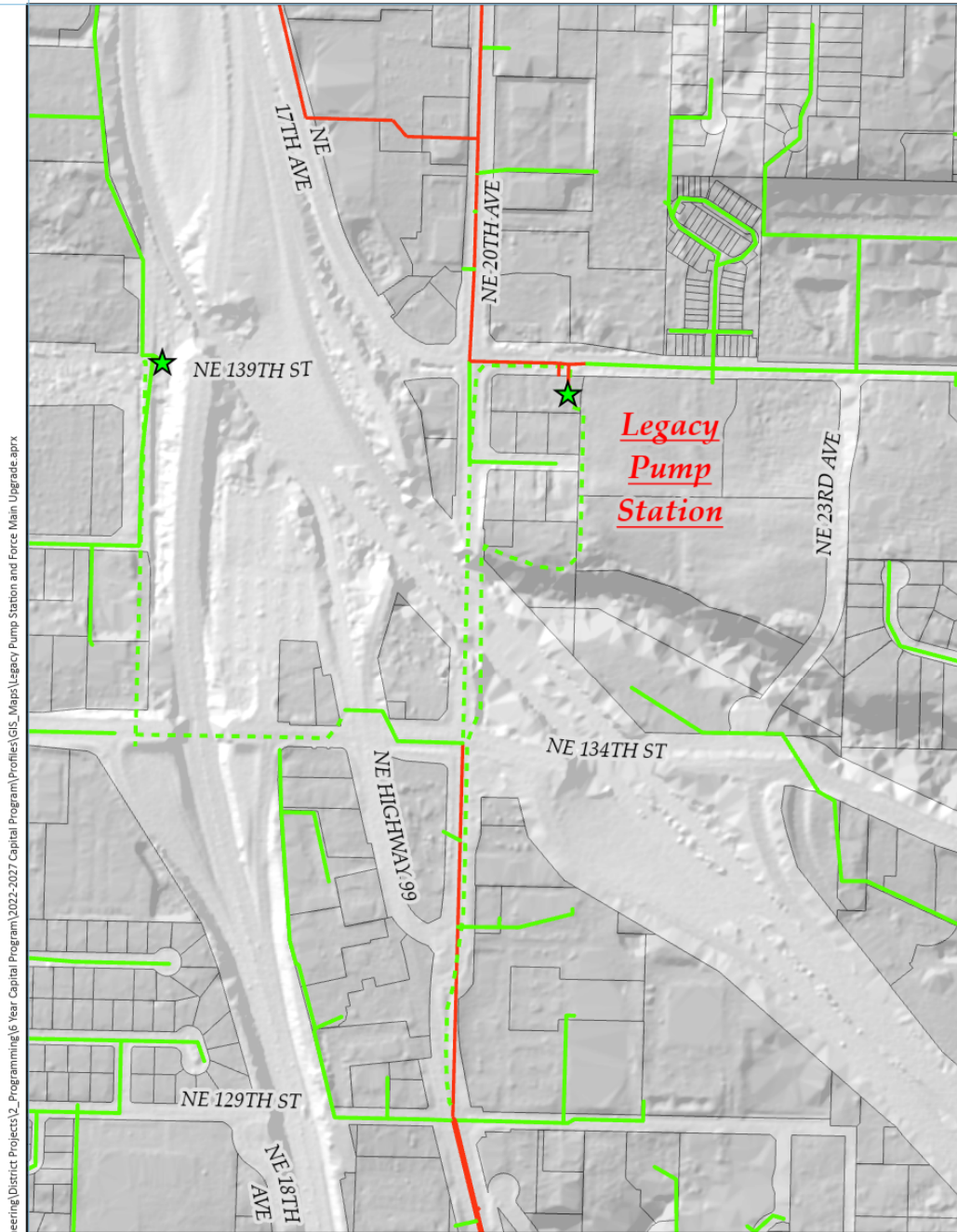
*Pioneer Canyon Force Main  
Connection*





*Neil Kimsey Pump Station Pump  
Additions*





Path: G:\Engineering\District Projects\2\_Year Capital Program\2022-2027 Capital Program\Profiles\GIS\_Maps\Legacy Pump Station and Force Main Upgrade.aprx



### Legacy Pump Station Improvements

